

# DESIGN 1

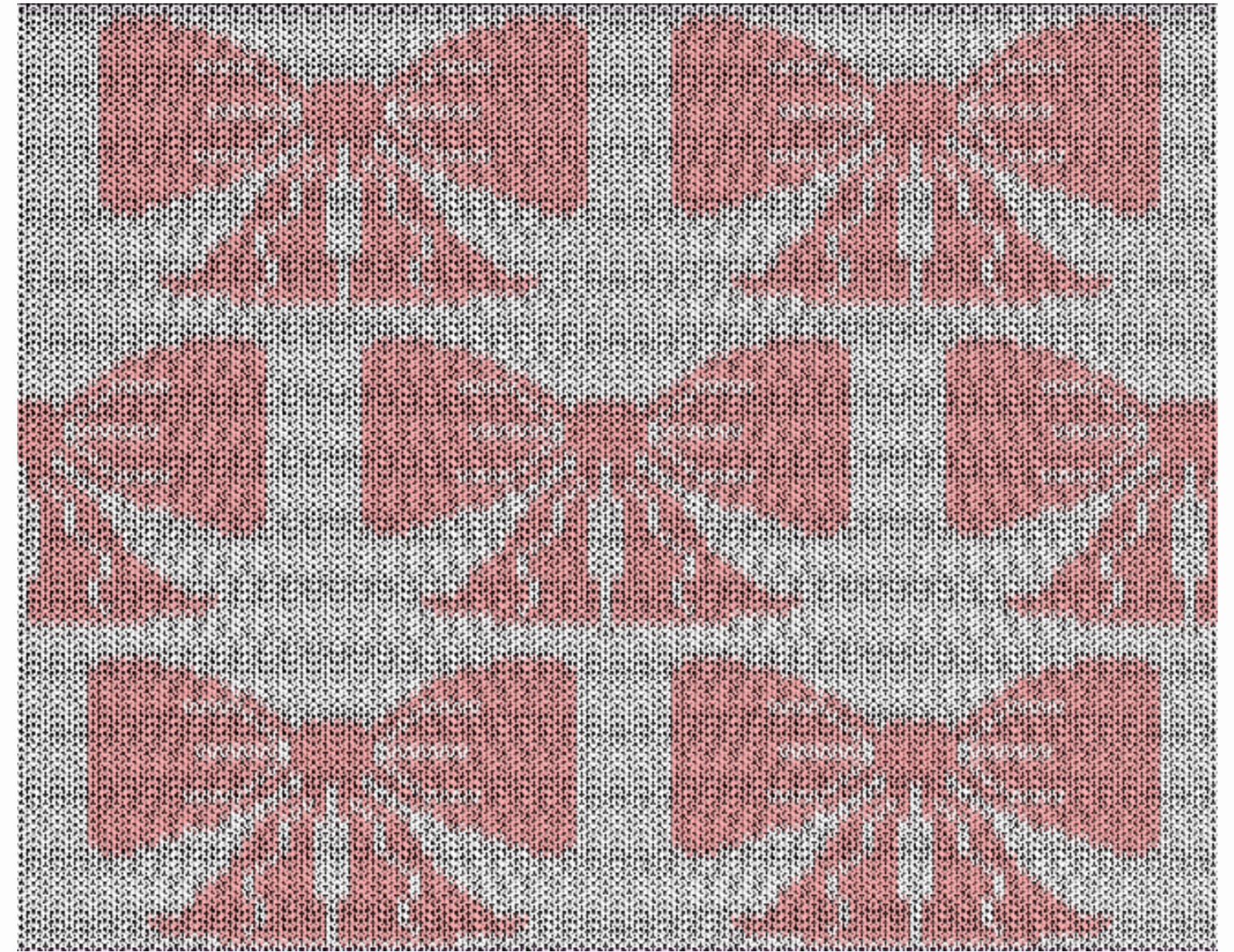
CMS ADF 3 7.2

# OUTSIDE

FRONT

*Flat*

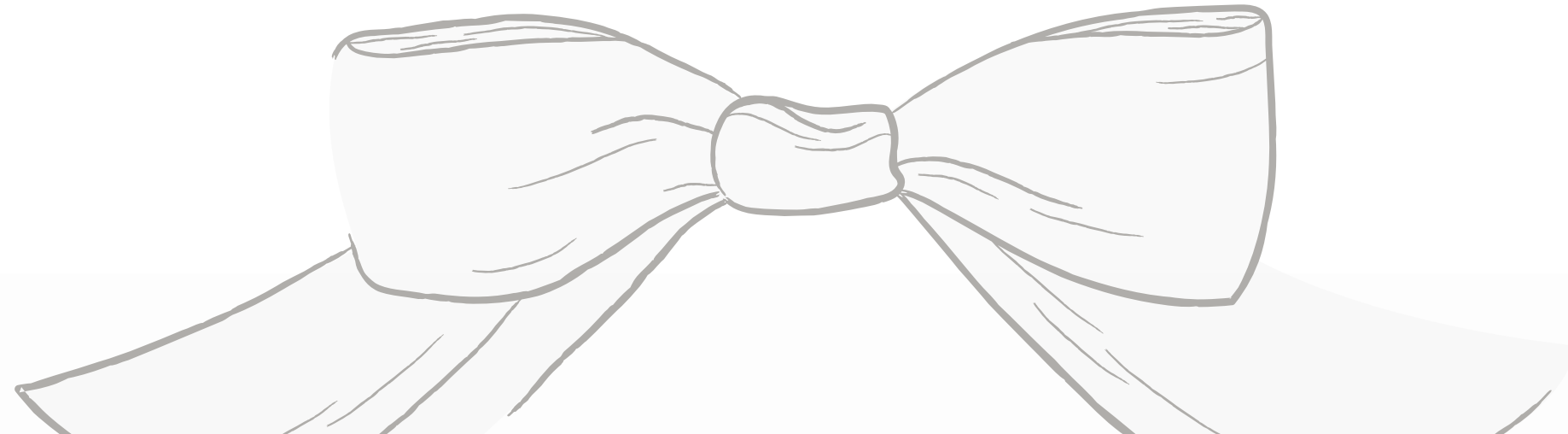
BACK



INSIDE



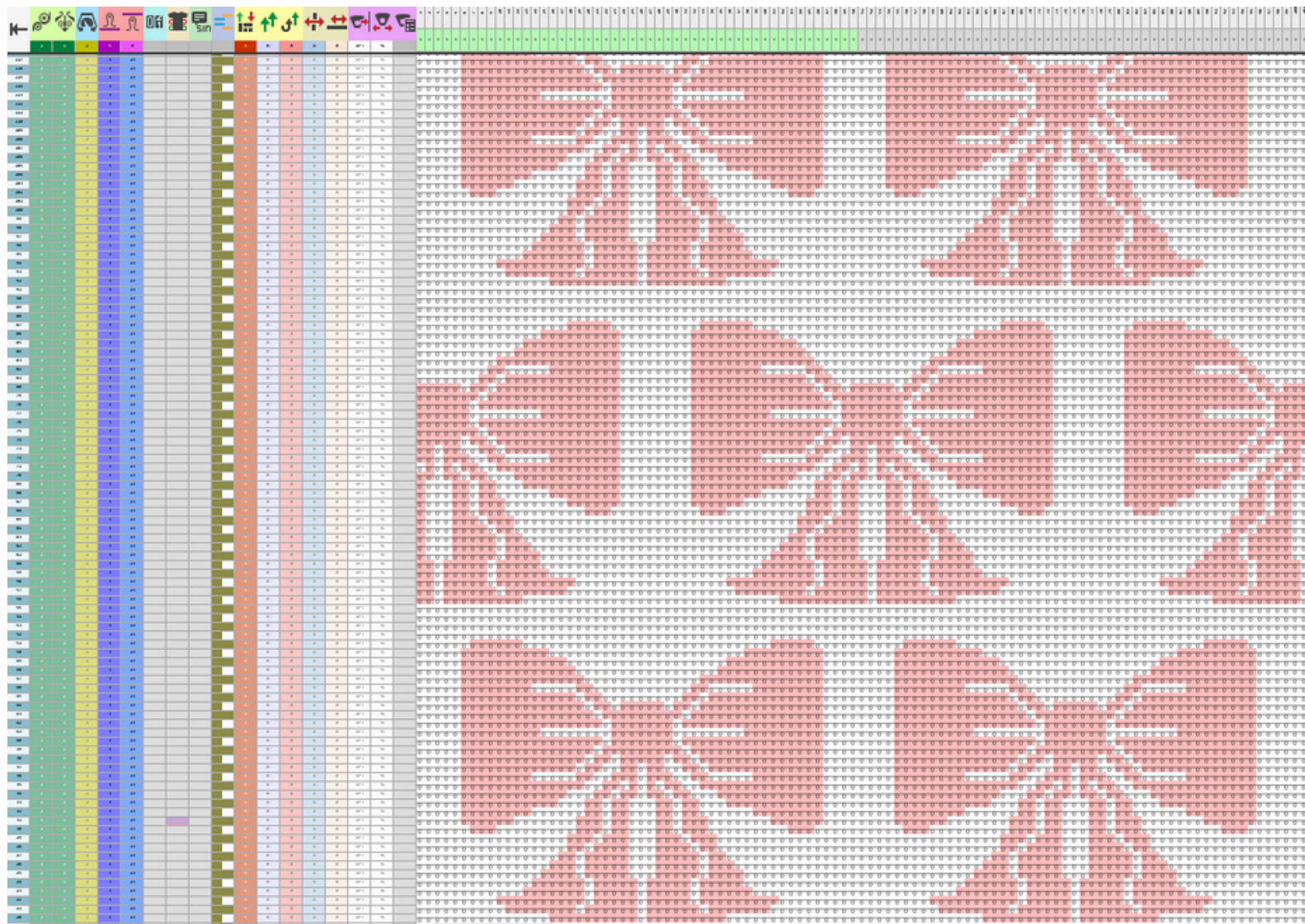
*Fabric Views*



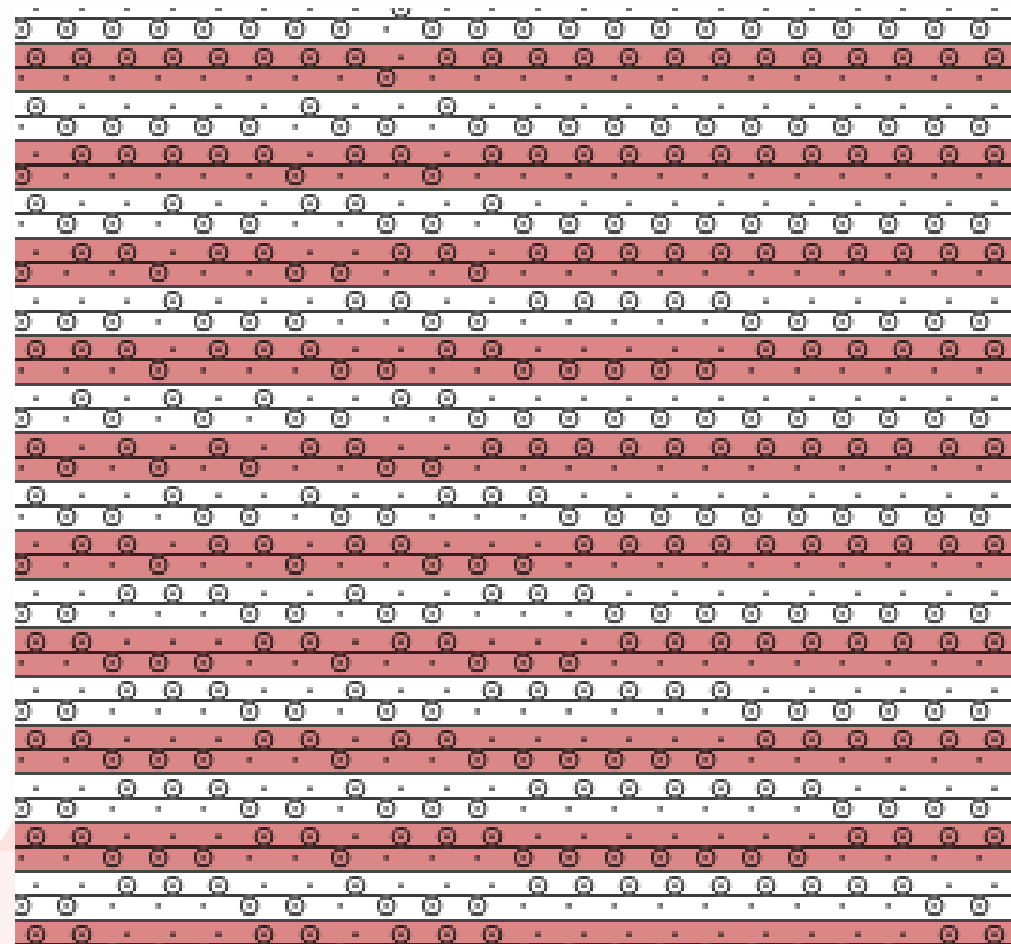
# DESIGN 1

CMS ADF 3 7.2

*Technical Panel View*



*Symbol View*



*Color Arrangement*

T		1	2	3	4	5	6	7	8
4	>>		.	2	⊙	2	⊙	.	.
3	>>		.	2	⊙	2	⊙	.	.
2	<<		.	1	⊙	1	⊙	.	.
1	<<		.	1	⊙	1	⊙	.	.
	🔍								
	→		n	*	n	*		←	↑

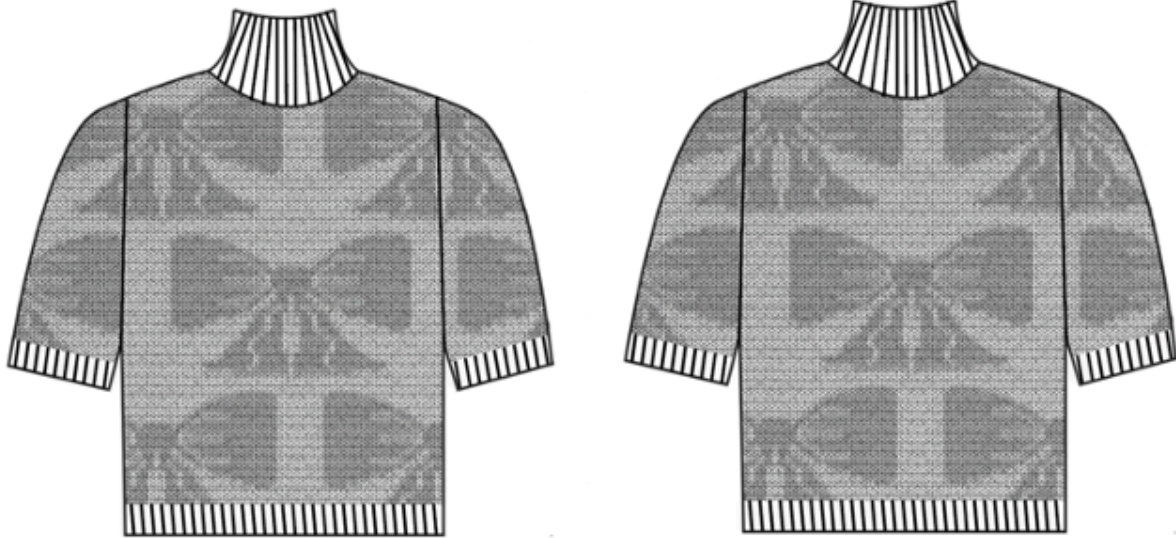
TUBULAR JACQUARD

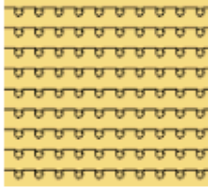
# TECH PACK

## DESIGN 1

<b>Lucabella Ralph</b>	<b>SKETCH</b> Style #: LDR23-201 Style Name: Tubular Jacquard Short Sleeve Sweater Season: Fall 2023	Size Range: XS-XL Sample Size: XS Date: 11/06/2023 Fabrication: Tubular Jacquard Knit
------------------------	---	--

Knit Structure:  
Tubular Jacquard



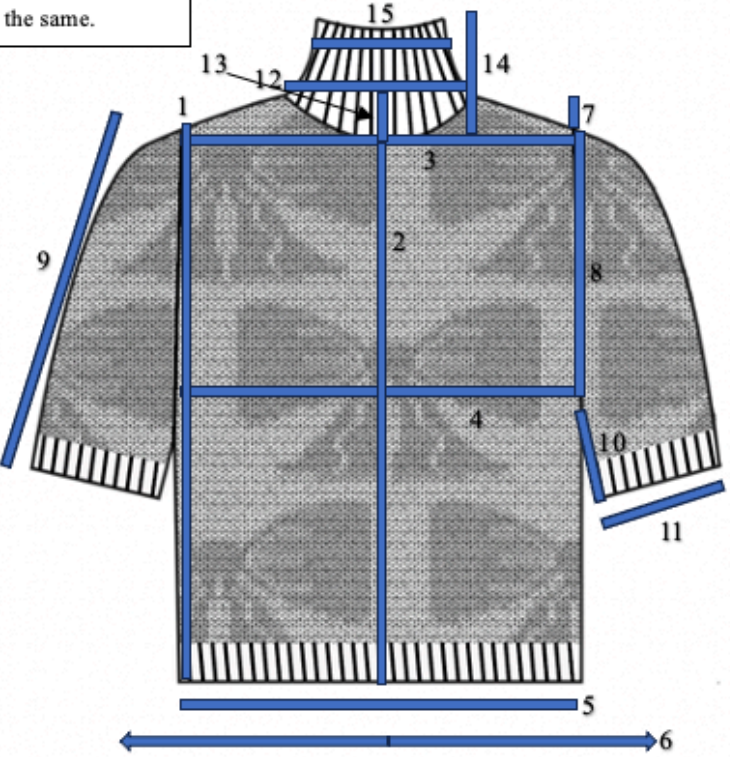


<b>Lucabella Ralph</b>	<b>POINTS OF MEASURE</b> Style #: LDR23-201 Style Name: Tubular Jacquard Short Sleeve Sweater Season: Fall 2023	Size Range: XS-XL Sample Size: XS Date: 11/06/2023 Fabrication: Tubular Jacquard Knit
------------------------	--	--

REF	AREA OF MEASUREMENT	Inches
1	Length From HPS	20"
2	Length Center	19.5"
3	Shoulder to Shoulder Width	14"
4	Chest Width 1" Below AH	14"
5	Waist Width	12"
6	Waist Width Stretched	14"
7	Shoulder Slope	2"
8	Armhole Straight Measure	8"
9	Sleeve Length (Shoulder to Edge)	12"
10	Sleeve Length (Armpit to Edge)	4.5"
NP	Sleeve Width Open (Laying Flat)	8.5"
NP	Sleeve Width Open Stretched	12.5"
11	Sleeve Width Closed (Arm Opening)	4.25"
12	Neck Opening (Seam to Seam)	8"
13	Neck Drop	2"
	Neck Finish (1x1 Rib)	
14	Length	5"
NP	Width Open	13"
NP	Width Open Stretched	17"
15	Width Closed	7.5"

Disclaimer: The front and back of the garment are identical therefore the measurements for the front and back are the same.

Stoll ADF 3  
Machine 7.2 Gauge  
699 Needle



1" = 17.04 CPI  
 1" = 14.25 NPI



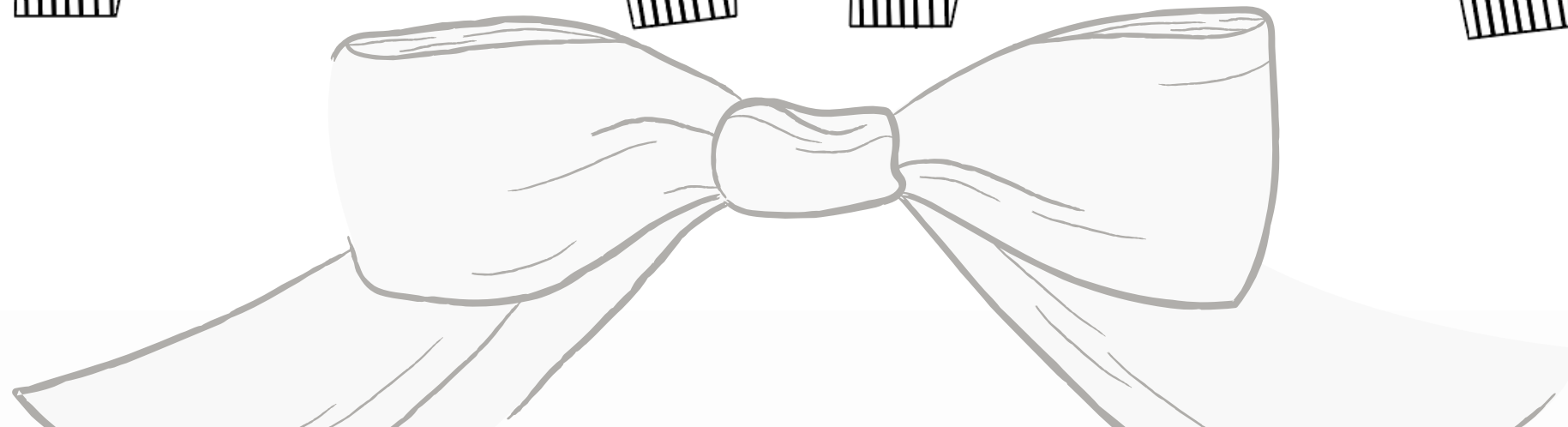
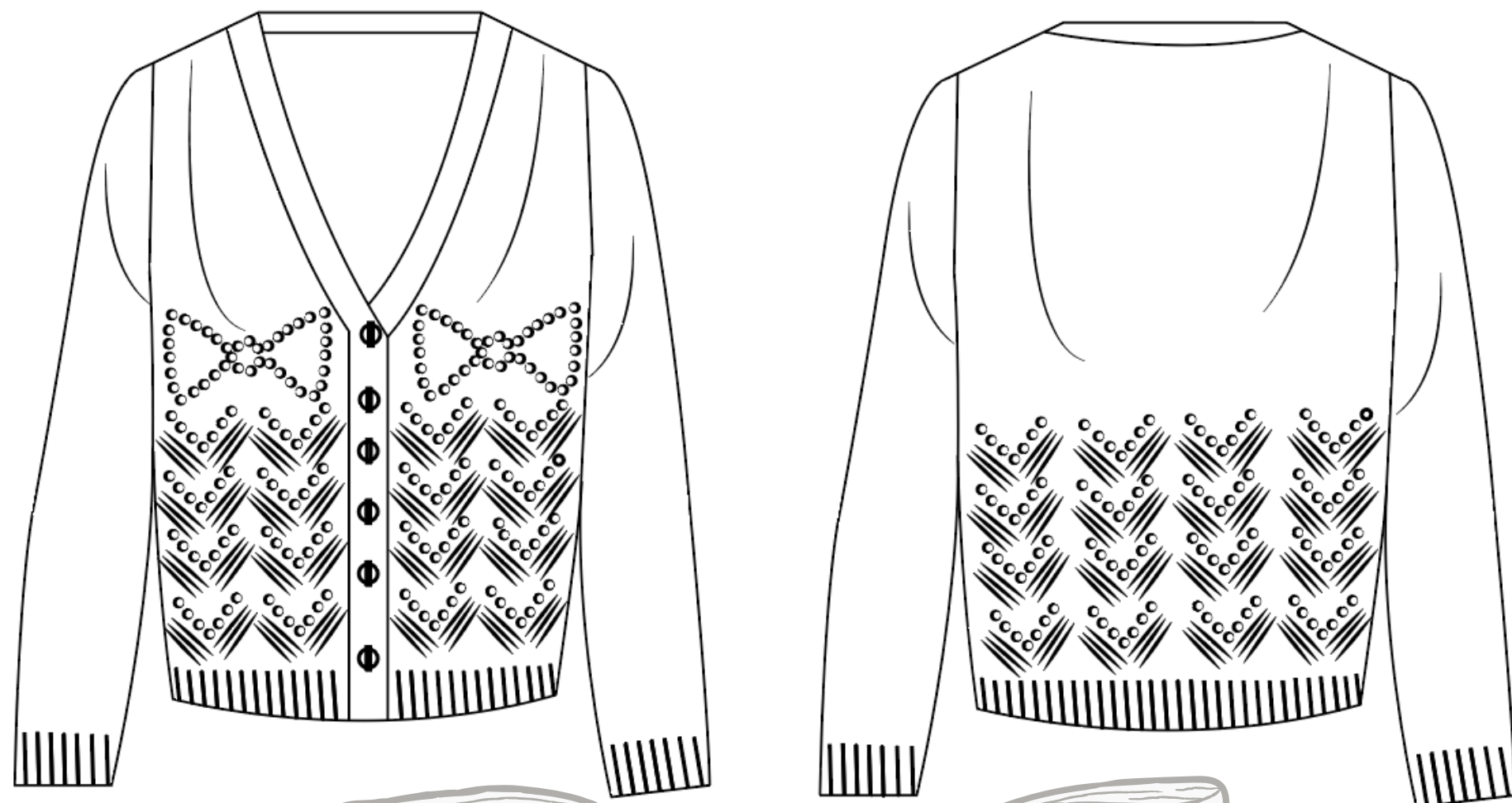
# DESIGN 2

CMS 520

*Flat*

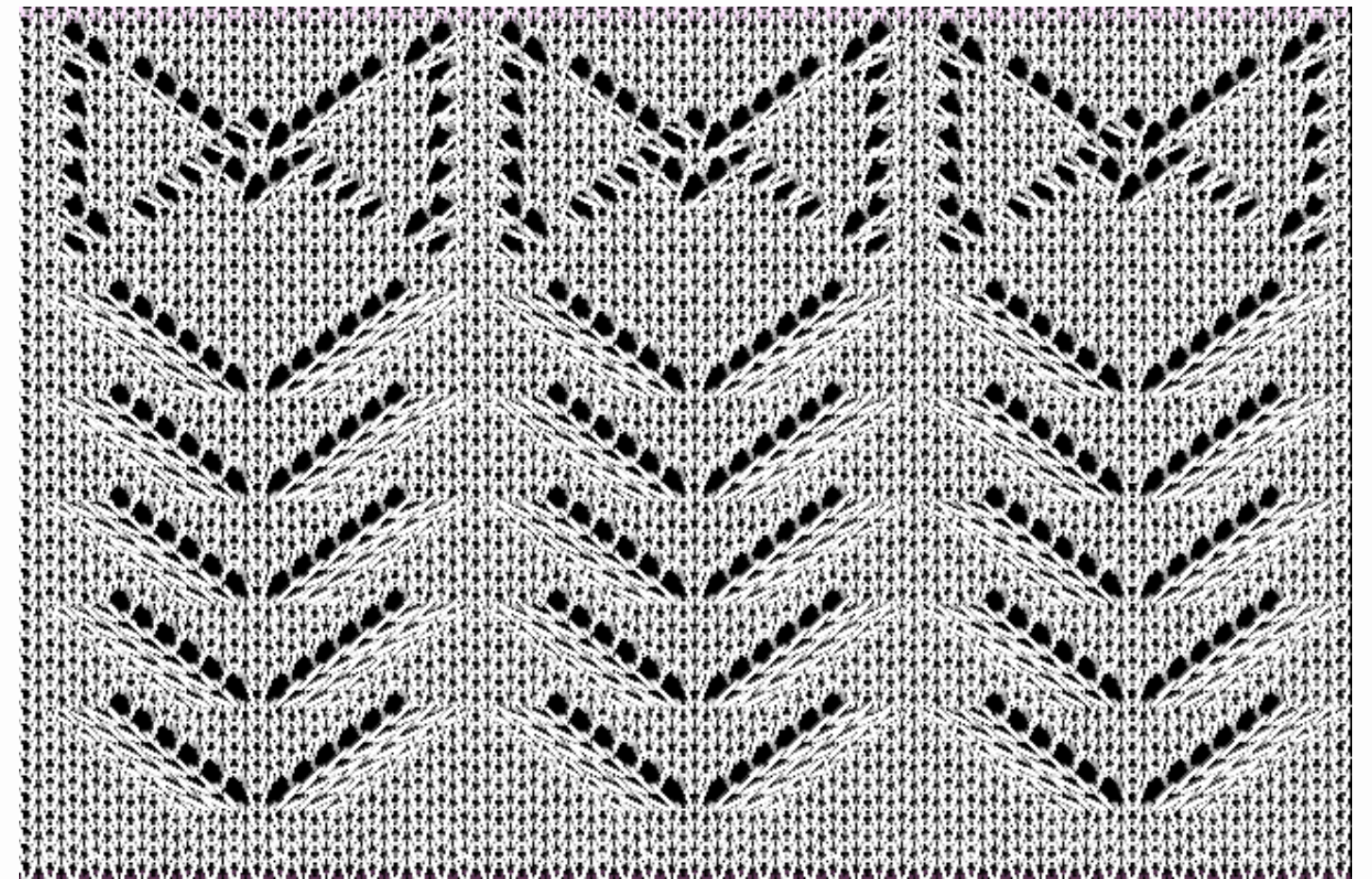
FRONT

BACK

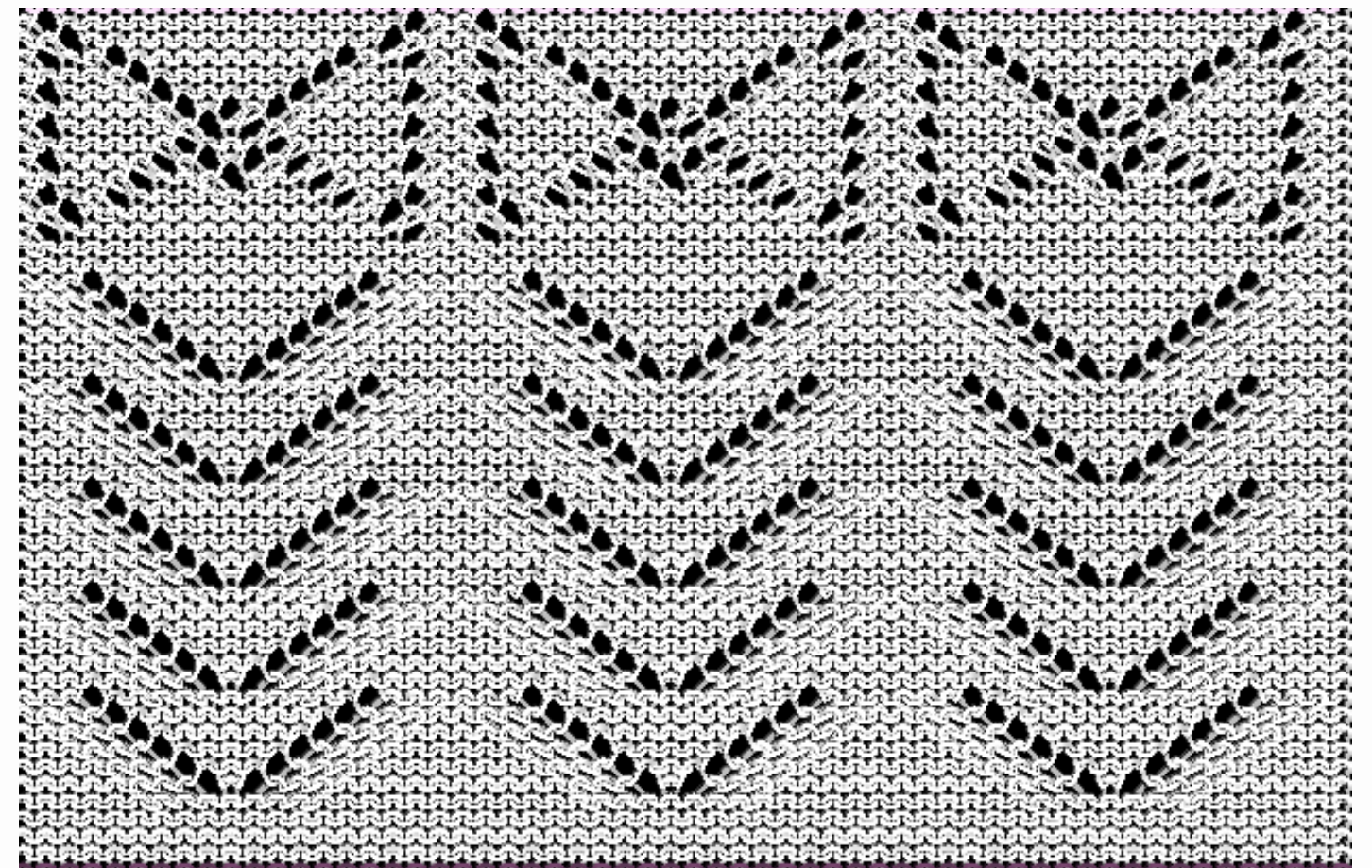


*Fabric Views*

FRONT



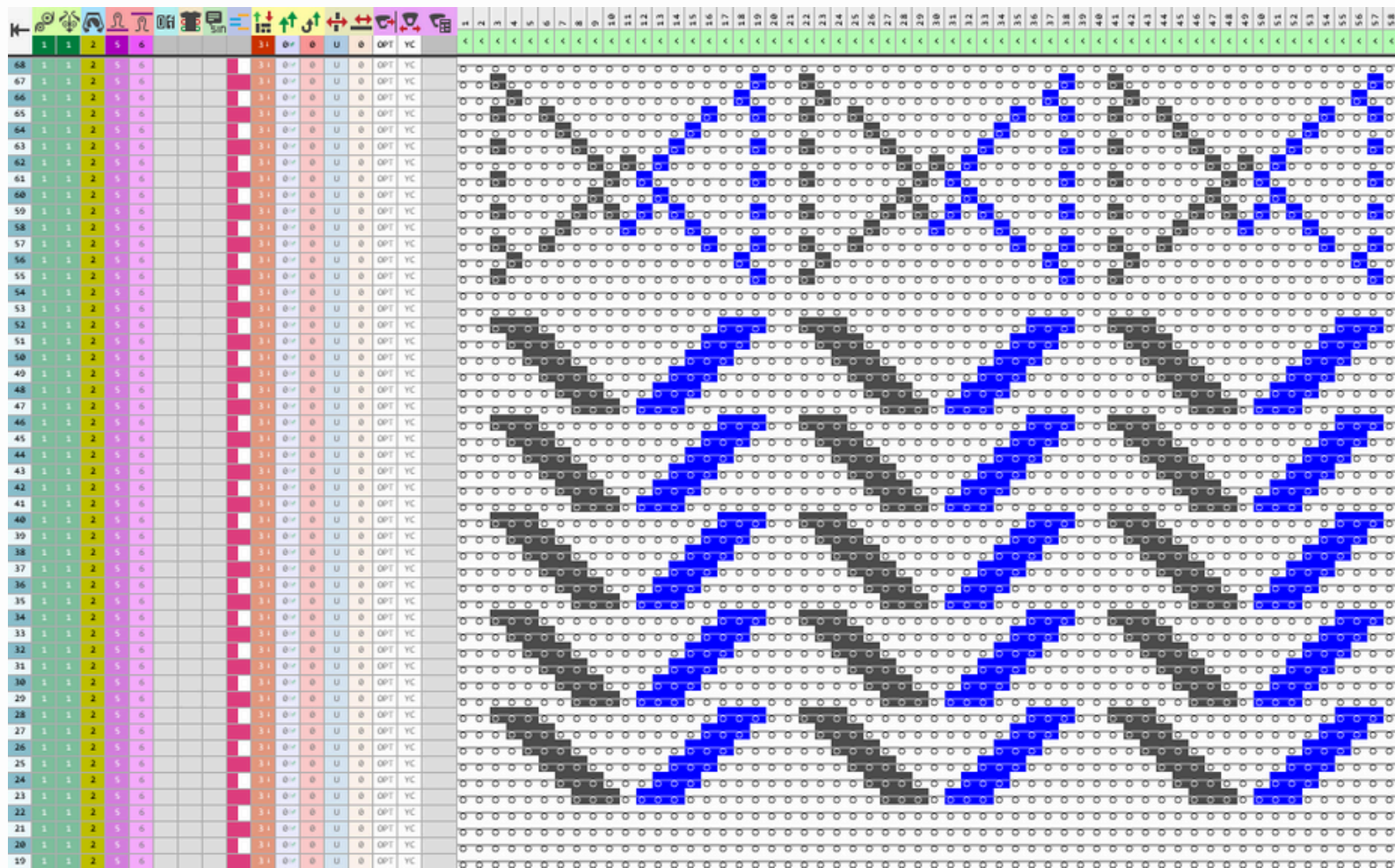
BACK



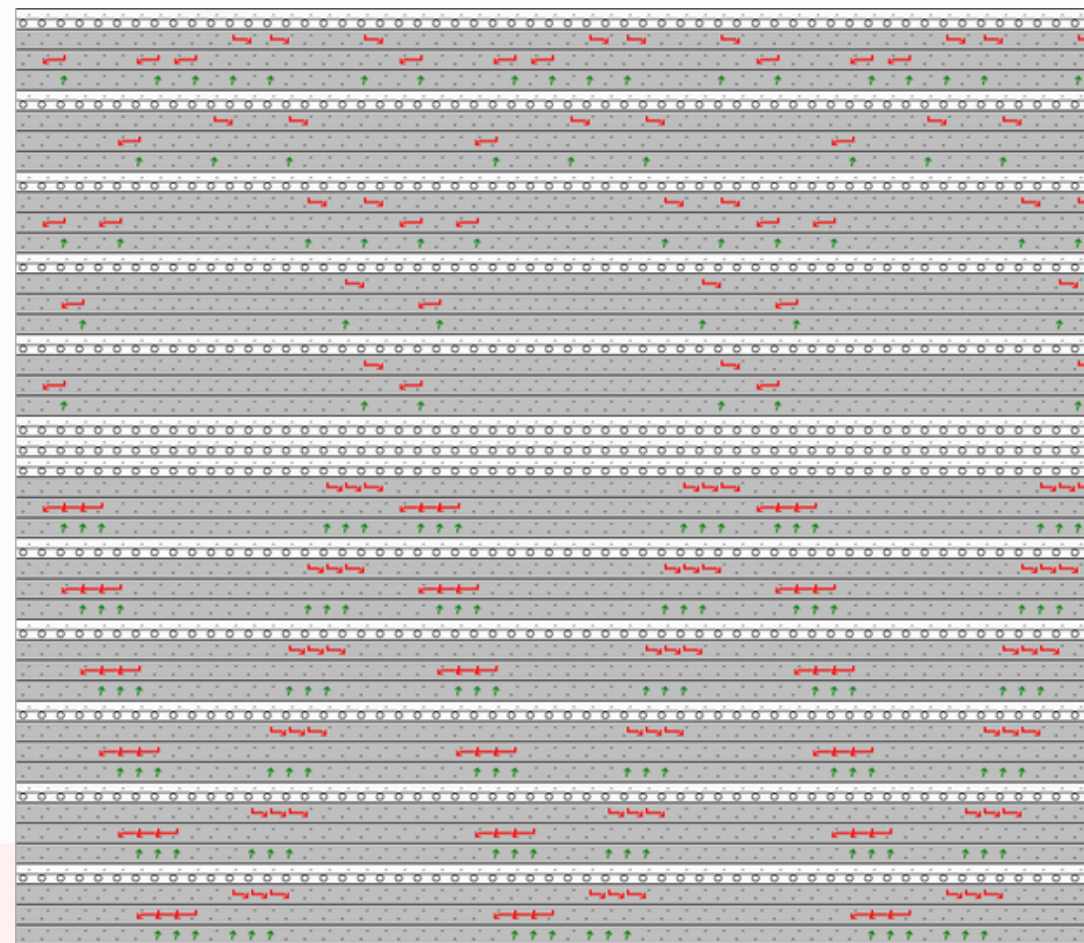
# DESIGN 2

CMS 520

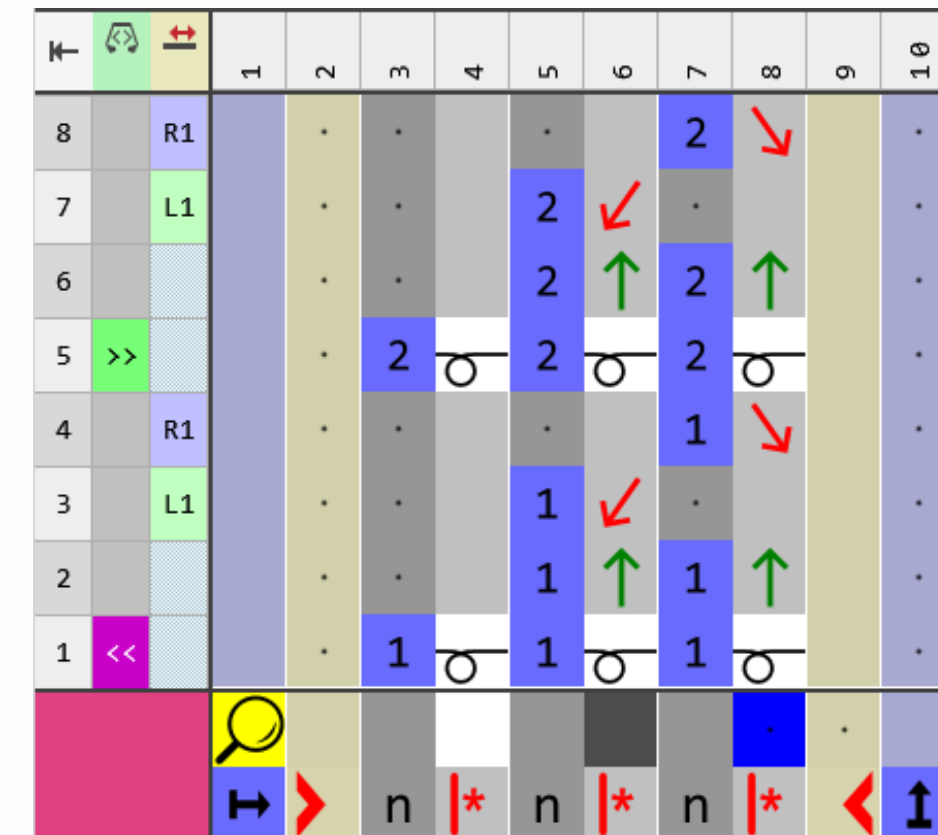
*Technical Panel View*



*Symbol View*



*Color Arrangement*



POINTELLES